

IDP-MONITOR-2

Addressable Dual Monitor Module

The IDP-MONITOR-2 is an addressable monitor module with two initiating circuits for use with Honeywell Farenhyt Series fire alarm control panels (FACPs). The IDP-MONITOR-2 acts as an interface to contact devices, such as waterflow switches and pull stations.

The IDP-MONITOR-2 supports Class B supervised wiring to the load device. Conventional 4-wire smoke detectors can be monitored for alarm and trouble conditions.

Because the IDP-MONITOR-2 is capable of monitoring two separate Class B circuits, it is ideal for waterflow tamper switch and flow switch monitoring.

Installation

The IDP-MONITOR-2 mounts directly into a 4" square electrical box. The box must have a minimum depth of 2-1/8". A surface mount electrical box (System Sensor® PN SMB500) is available from Honeywell.

COMPATIBILITY

The IDP-MONITOR-2 is compatible with the following Honeywell Farenhyt Series FACPs:

- IFP-2100 / IFP-2100ECS / RFP-2100
- IFP-2000 / IFP-2000ECS / RPS-2000
- IFP-1000 / IFP-1000ECS
- IFP-300 / IFP-300ECS
- IFP-100 / IFP-100ECS
- IFP-75
- IFP-50

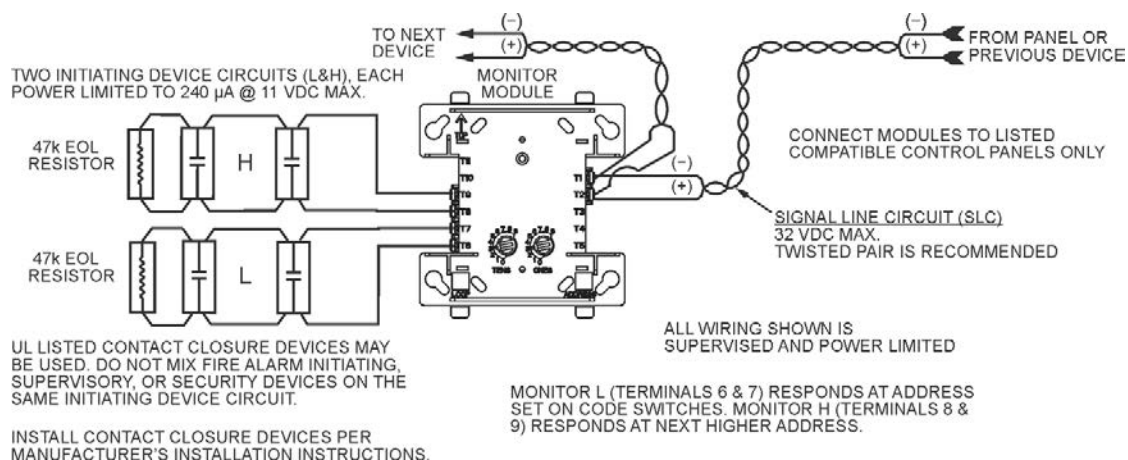
FEATURES & BENEFITS

- Monitor two circuits, with unique addresses, simultaneously
- Support for Class B wiring
- Fully supervised
- Panel controlled status LED that flashes green in normal state and is solid red in alarm
- Rotary address switches for fast installation
- SEMS screws for easy wiring
- UL Listed
- CSFM Listed
- MEA Listed 457-99-E Vol. V



IDP-MONITOR-2

IDP-Monitor-2 Technical Specifications



Typical Wiring for IDP-Monitor-2 Module, NFPA Style B

PHYSICAL

Dimensions: 4.5" H x 4" W x 1.3 D (11.4 x 10.2 x 3.2cm)

Shipping Weight: 6.3oz (196g)

ELECTRICAL RATINGS

Operating Voltage: 15 – 32VDC

Maximum Current Draw: 6.4mA (LED on)

SLC Standby & Alarm Current: 750µA max @ 24 VDC (one communication every sec with 47k EOL)

End of Line Resistance: 47kΩ

ENVIRONMENTAL

Operating Temperature: 32°-120°F (0°C – 49°C)

Humidity: 10 to 93% non-condensing)

ORDERING INFORMATION

IDP-MONITOR-2: Dual Monitoring Module

ACCESSORIES

SMB500: 4" Square Surface Mount Electrical Box

For a complete listing of all compliance approvals and certifications, please visit www.farenhyt.com.

Microsoft, Windows, and the Windows Logo are registered trademarks or trademarks of Microsoft Corporation.

Honeywell® and System Sensor® are registered trademarks of and Farenhyt™ is a trademark of Honeywell International, Inc.

This document is not intended to be used for installation purposes. We try to keep our product information up-to-date and accurate. We cannot cover all specific applications or anticipate all requirements. All specifications are subject to change without notice.

For Technical Support, Please call 800-446-6444.

For more information

Learn more about Honeywell's Farenhyt Series and other products available by visiting www.farenhyt.com

Honeywell Security & Fire

12 Clintonville Road
Northford, CT 06472
800-328-0103

Doc 350289 | Rev G1 11/17
© 2017 Honeywell International Inc.

Honeywell
THE POWER OF **CONNECTED**